

FITCHBURG AGRICULTURE PAST AND PRESENT BIKE TOUR

DO YOU ENJOY RIDING YOUR BIKE ON THE BADGER STATE TRAIL?

EVER WONDERED ABOUT FITCHBURG'S HISTORY OR WHAT HAPPENS ON THE LAND SURROUNDING THE TRAIL?

DOES THE THOUGHT OF ICE CREAM ON A WARM SPRING DAY MAKE YOUR MOUTH WATER?

HAVE YOU HEARD ABOUT ELECTRIC BIKES? WANT TO TRY ONE OUT?



If so, the **FITCHBURG AGRICULTURE PAST AND PRESENT BIKE TOUR** is for you. Get some exercise, learn about historic and present-day agriculture in Fitchburg, enjoy some ice cream, and try out an electric bike.

WHEN: 10:00 a.m., Saturday, May 18.

WHERE: Meet at the intersection of Marketplace Drive and the Badger State Trail in Fitchburg at 9:45 a.m., or 9:00 a.m. if you want to test ride an electric bike.

(Off-street parking available at 2908 Marketplace Drive – Rain date: 10:00 a.m., Sunday, May 19)

TO SIGN UP FOR THE TOUR, OR IF YOU NEED FURTHER INFORMATION, CONTACT: 608.270.4285 OR tony.king@city.fitchburg.wi.us, OR see www.city.fitchburg.wi.us.

Details

Time: 10:00 a.m., Saturday, May 18

Beginning and Ending Location: Marketplace Drive and Badger State Trail, City of Fitchburg

Length: Approximately 2 - 2.5 hours

Distance: Approximately 7 miles

Appropriate Ages: All ages (Bikers 8 years old and up)

Itinerary (See Map on Next Page)

- 1. Mile 0.0:** Leave Marketplace Drive
- 2. Mile 0.2:** McKenna Barn
- 3. Mile 0.5:** Stoner Prairie and Old Cheese Factory
- 4. Mile 1.8:** Vroman Homestead, Stoner Schoolhouse, and Old Lead Trail/Mine
- 5. Mile 3.5:** Old Fitchburg and Horse Farms – Break
- 6. Mile 5.0:** Community Gardens and Eplegaard
- 7. Mile 5.7:** Productive Agricultural Soils
- 8. Mile 6.3:** Stoner Prairie Dairy
- 9. Mile 7.0:** Arrive Marketplace Drive – ICE CREAM!!!

Sponsor



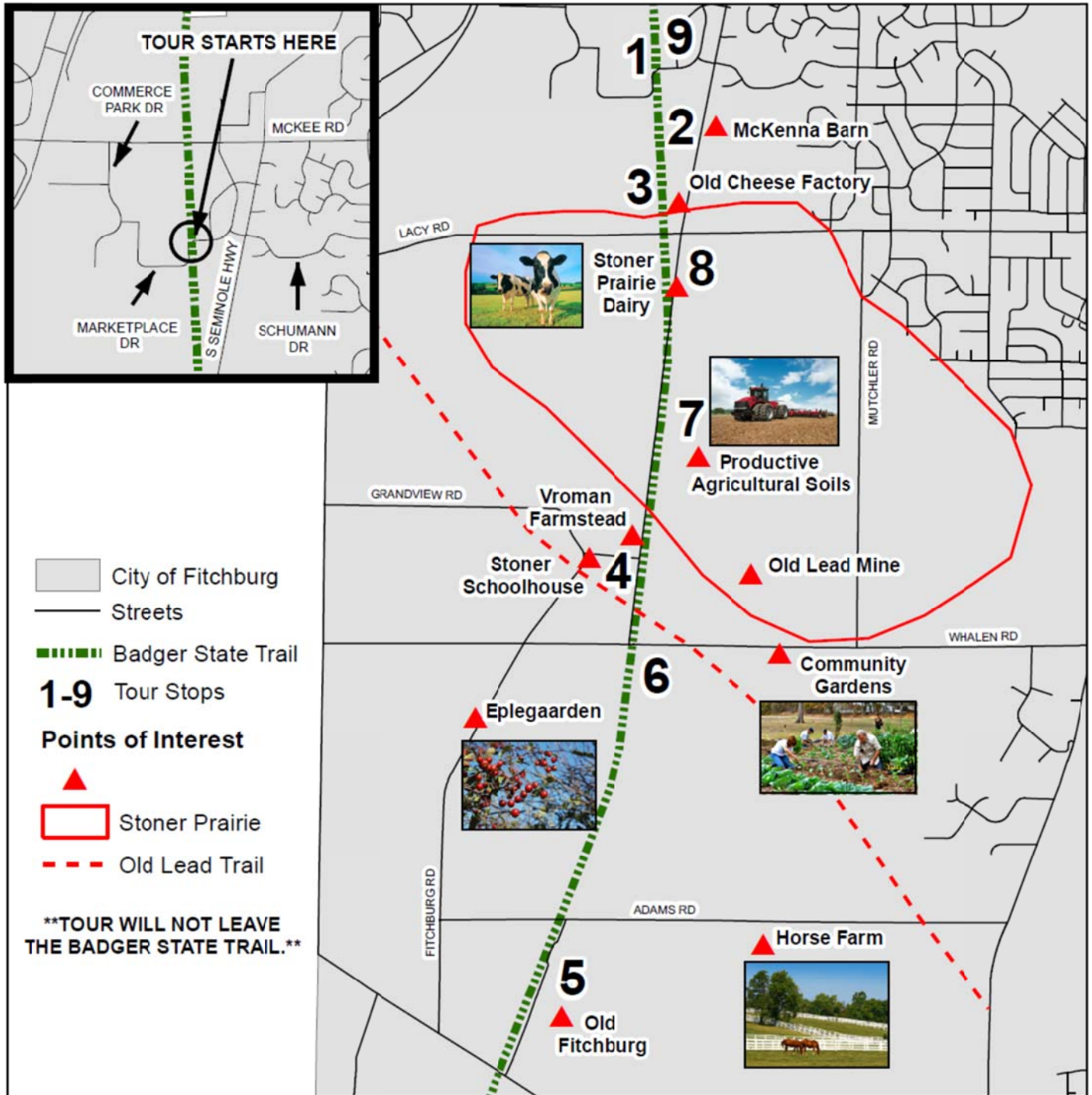
Partners



****Bike helmets and drinking water recommended.****

****Bike trail passes (\$4) required for bikers 16 years and older (Purchase in advance or the day of the tour).****

**** Restroom facilities will not be available on the tour.****



Fitchburg Agriculture Past and Present Bike Tour Badger State Trail



0 0.25 0.5 1 Miles

CREATED BY: PLANNING & ZONING DEPARTMENT 04/2013
SOURCE: PLANNING & ZONING DEPARTMENT AND DANE COUNTY LIO

